

# Plan View of Hoistway

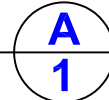
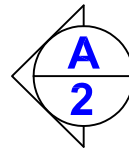
It is recommended that the wall opposite rail not be constructed on the lower level until after the Dumbwaiter is installed.

For Approval

Approved as drawn  
 Approved as noted  
 Revise and Resubmit

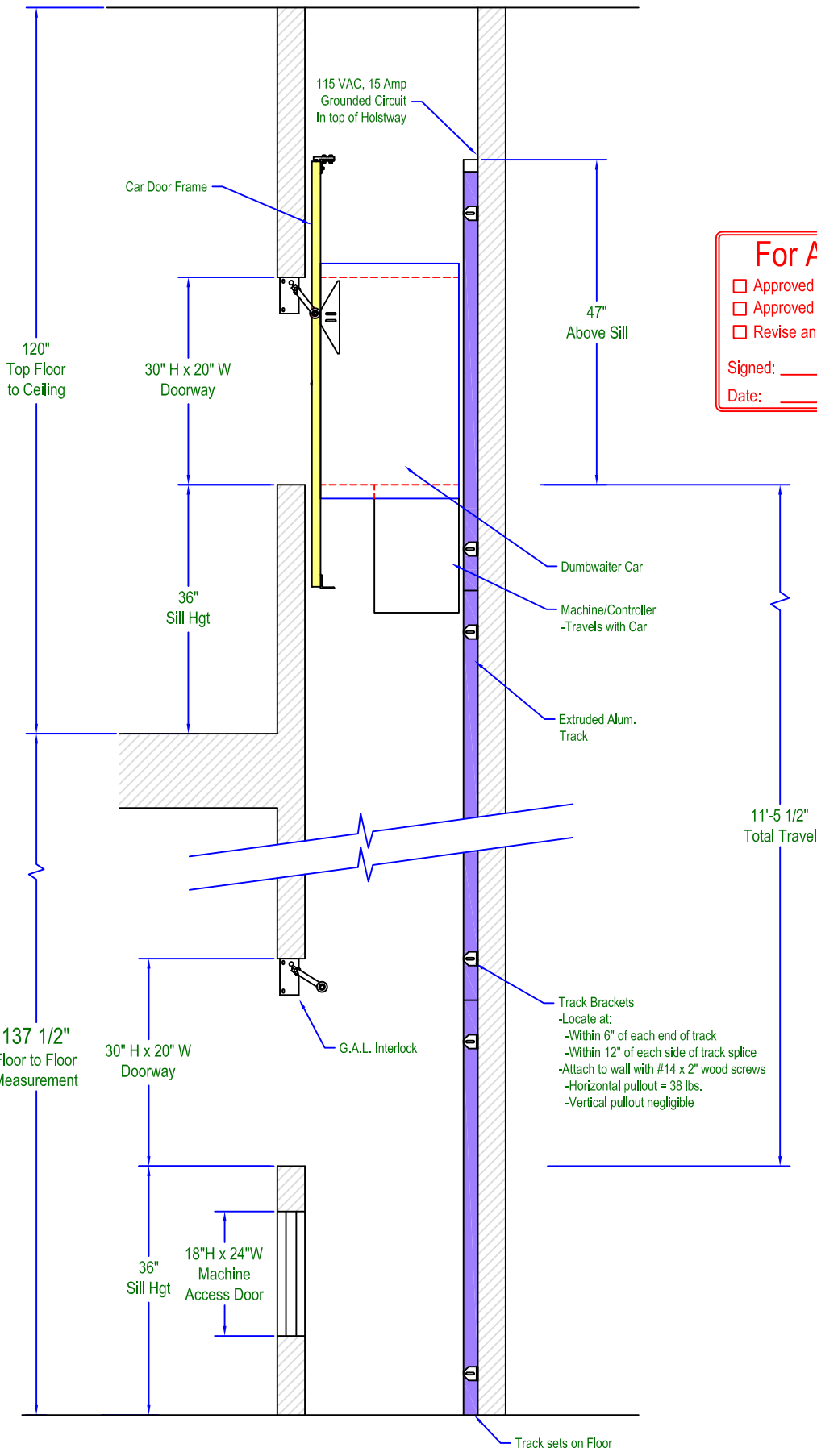
Signed: \_\_\_\_\_

Date: \_\_\_\_\_



		<small>18505 E. 143rd Street - Lake Winnebago, MO 64034          PHONE: (816) 537-0661 FAX: (816) 537-0641</small>		<small>This drawing is furnished only for informational purposes on a confidential basis, and neither the drawing or items thereon are to be reproduced or used in any manner.</small>	
PRODUCT: Ascent@ Dumbwaiter	DEALER: AmeriGlide	DATE: 07/01/13	CUSTOMER: Shultz	SHEET: 1 of 3	REV: A
DRAWN: TB	SCALE: NTS	SHEET: 1 of 3	SIZE: A	JOB: 1307101	REV: A

REVISION DESCRIPTION	BY	DATE



**For Approval**

Approved as drawn  
 Approved as noted  
 Revise and Resubmit

Signed: \_\_\_\_\_  
 Date: \_\_\_\_\_

# Side View of Hoistway

A  
2

<b>Ascent® Dumbwaiter</b>		DEALER: AmeriClic	
DRAWN: TB	SCALE: NTS	CUSTOMER: Shultz	
DATE: 07/01/13		SHEET: 2 of 3	REV: A
JOB: 1307101		SIZE: A	REV: A

**Harmar**  
America's Lift Leader

18505 E. 163rd Street, Lake Winnebago, MO 64034  
 PHONE: (816) 537-0661 FAX: (816) 537-0641

This drawing is furnished only for informational purposes on a confidential basis, and neither the drawing or items thereon are to be reproduced or used in any manner.

REV.	REVISION DESCRIPTION
BY	DATE

# General Specifications

- Car Size:** 20"W x 20"D x 30"H
- Finish:** Durable Powder Coat
- Capacity:** 100 lbs.
- Track:** 6063-T6 Extruded Aluminum
- Controls:** Automatic Operation, 24 VAC Call-Send Controls at each landing
- Power Source:** 115 VAC, 15 Amp Circuit
- Motor:** 1/2 HP 90 VDC
- Drive Cable:** Galvanized Aircraft Cable - 1800 lb. breaking strength
- Speed:** 20 fpm
- Travel:** 11'-5 1/2"
- Car Weight:** 185 lbs.
- Car Door:** Biparting Vertical Sliding Door
- Safety Devices:** Limit Switches at each Stop  
Final Limit Switch at Top & Bottom  
Mechanical Stop at Bottom  
Slack Cable Brake and Switch  
Car Door Switch  
G.A.L. Interlocks at each hoistway door
- Optional Equipment:** none
- Warranty:** 2 years on parts, 5 years on drive train

For Approval

Approved as drawn

Approved as noted

Revise and Resubmit

Signed: \_\_\_\_\_

Date: \_\_\_\_\_

## Notes

Hoistway by others. Hoistway construction requirements may vary from state to state. Dimensions given are Harmar's recommended clearances, reflecting running and access clearances. Consult local authority to assure compliance with state and local codes.

Hoistway to be free of all pipes, wiring and obstructions not related to the operation of the dumbwaiter.


Hoistway walls to be plumb and square.

Hoistway doors by others.

Machine access door by others. ASME A17.1, Part 7, (safety code for dumbwaiters and material lifts), requires that machine access doors be provided with a switch that prevents the dumbwaiter from operating when the door is open. This switch is to be provided by the installer.

Any alterations to equipment without written authorization by Harmar will void all warranties.

REV. DESCRIPTION BY DATE

 <p style="font-size: small;">18505 E. 163rd Street Lake Winnebago, MO 64034 PHONE: (816) 537-0661 FAX: (816) 537-0641</p> <p style="font-size: x-small;">This drawing is furnished only for informational purposes on a confidential basis, and neither the drawing or items thereon are to be reproduced or used in any manner.</p>	
<b>PRODUCT:</b> Ascent@ Dumbwaiter <b>DEALER:</b> AmeriGlide <b>DRAWN:</b> TB <b>SCALE:</b> NTS <b>JOB:</b> 1307101	<b>DATE:</b> 07/01/13 <b>CUSTOMER:</b> Stultz <b>DATE:</b> 07/01/13 <b>SHEET:</b> 3 of 3 <b>SIZE:</b> A <b>REV:</b> A